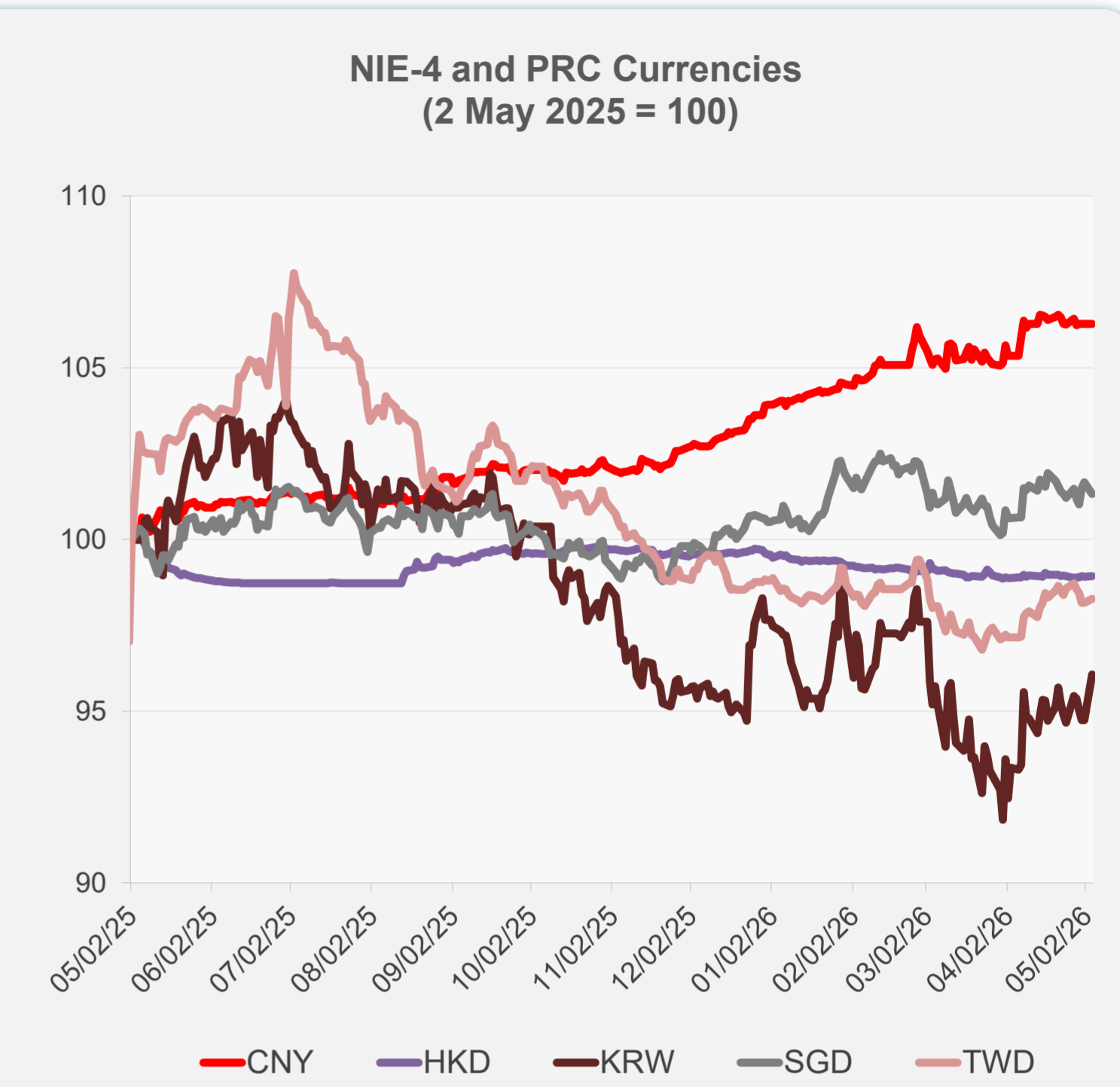
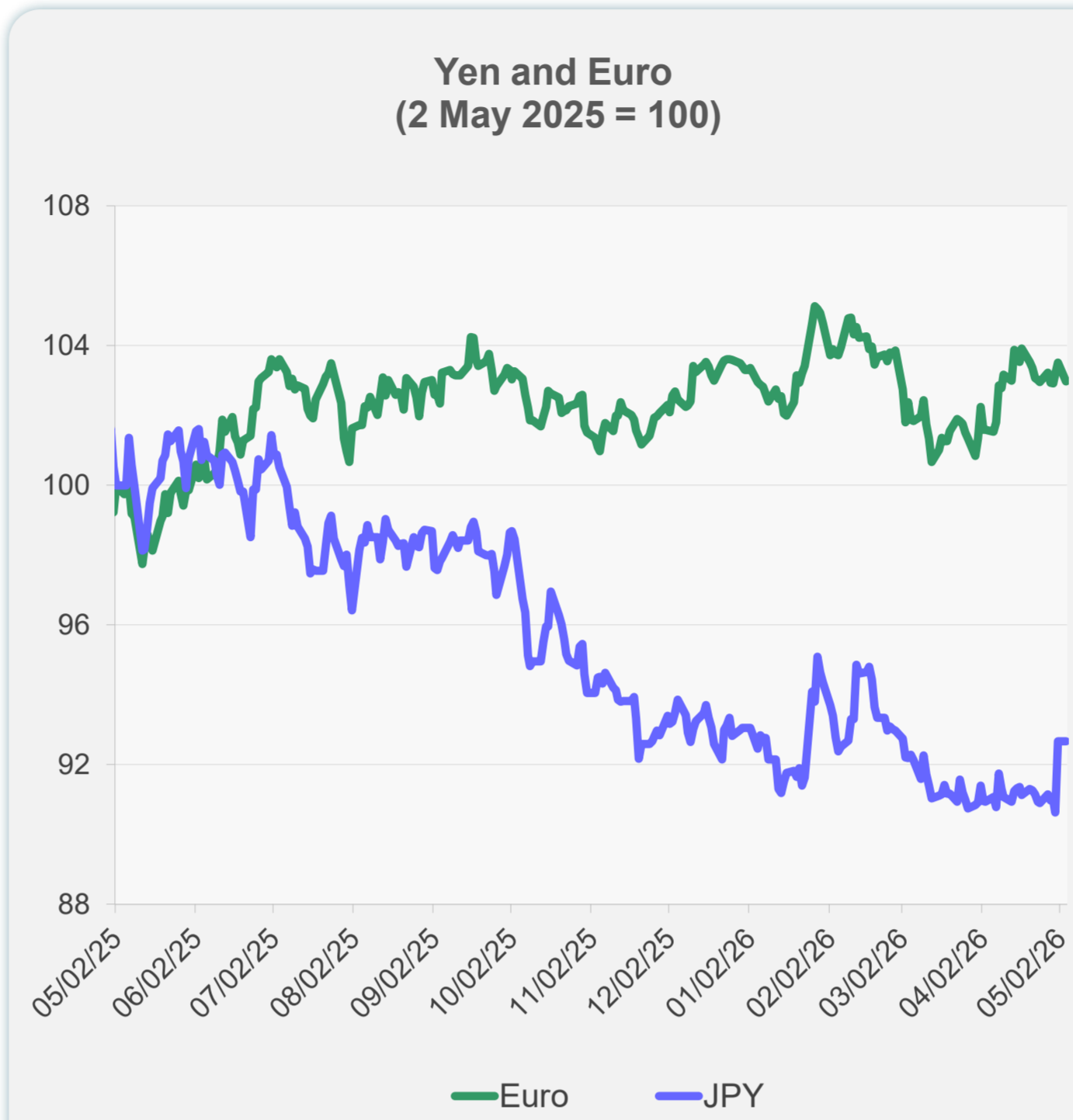
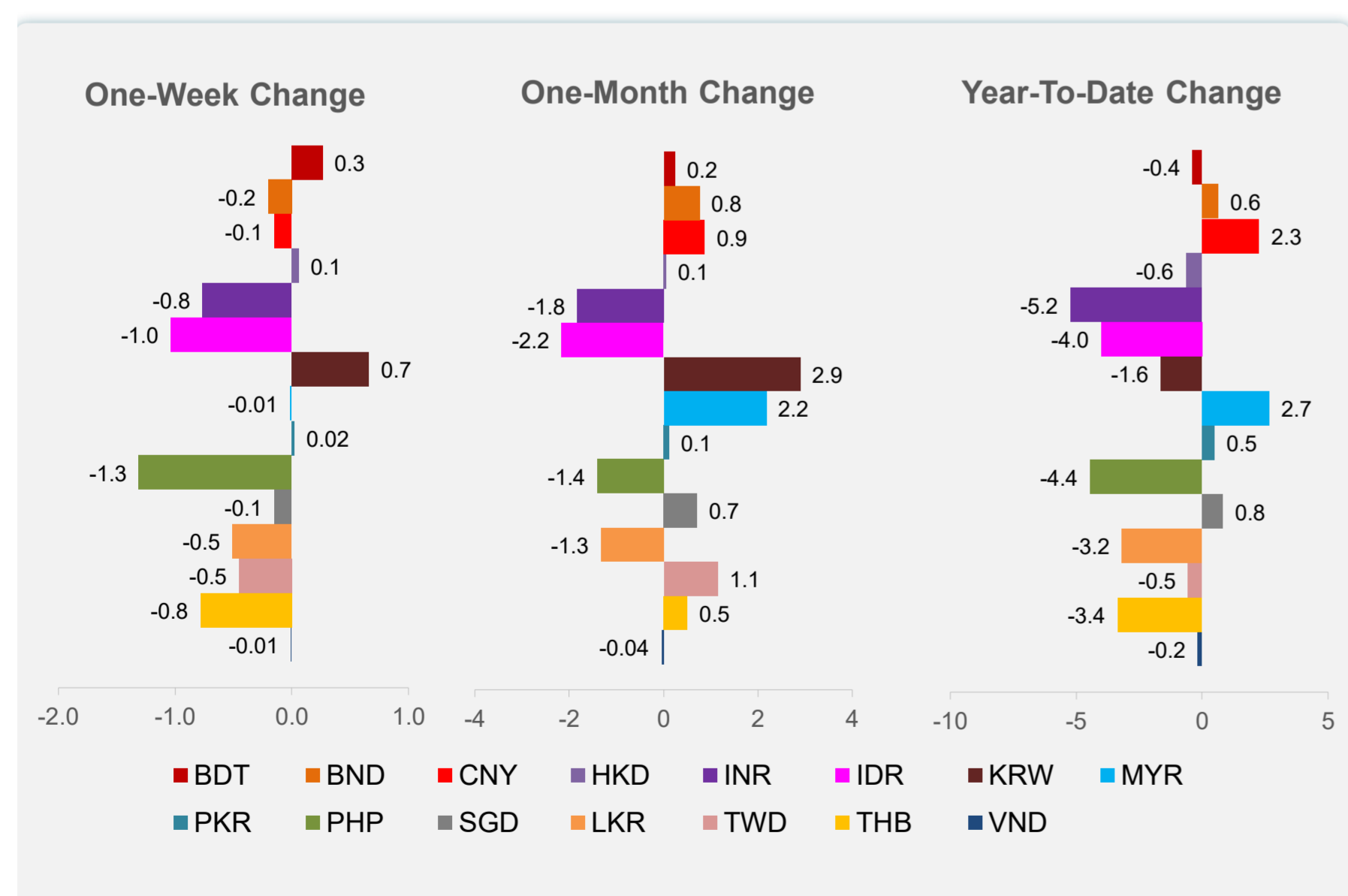
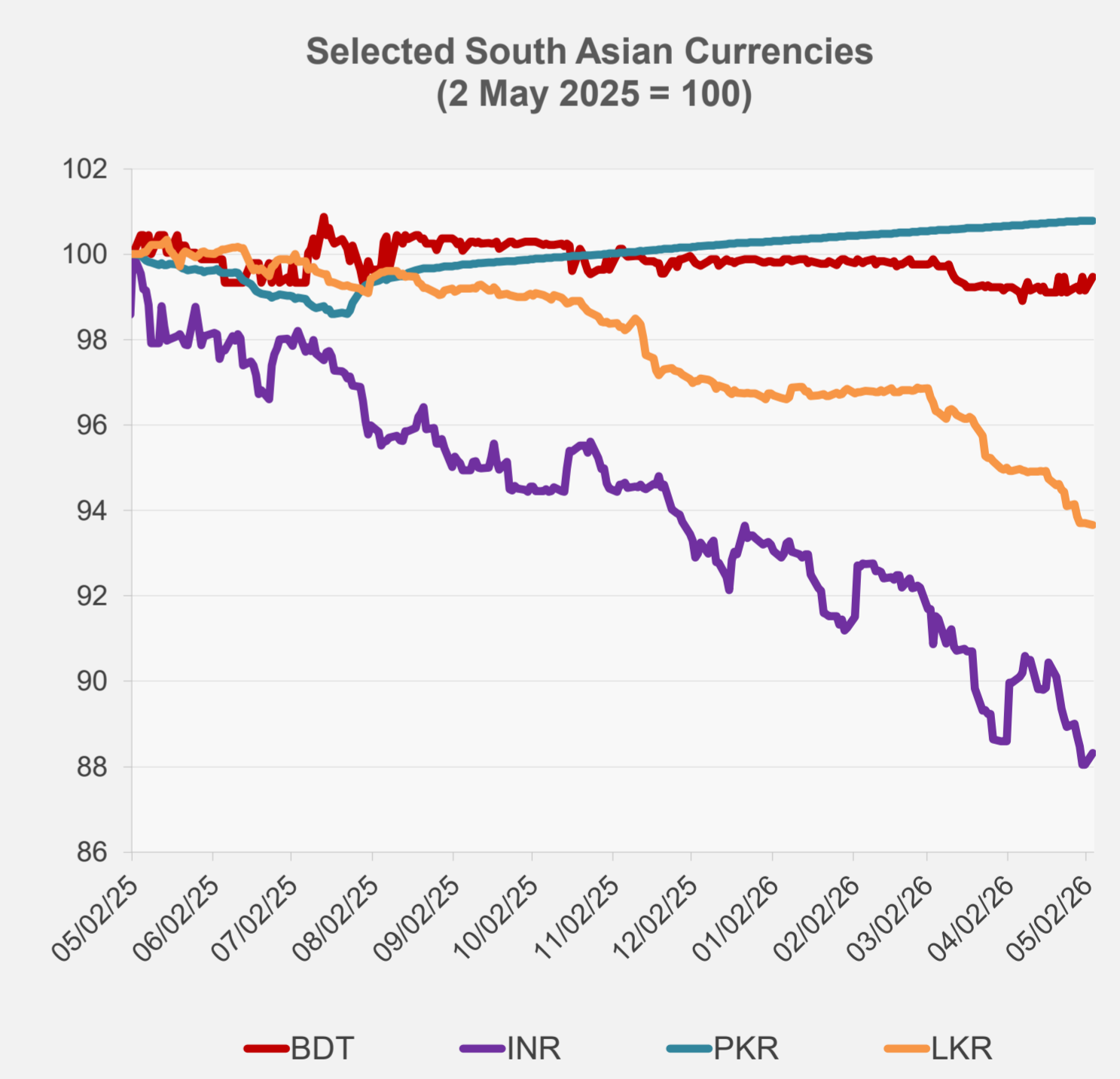
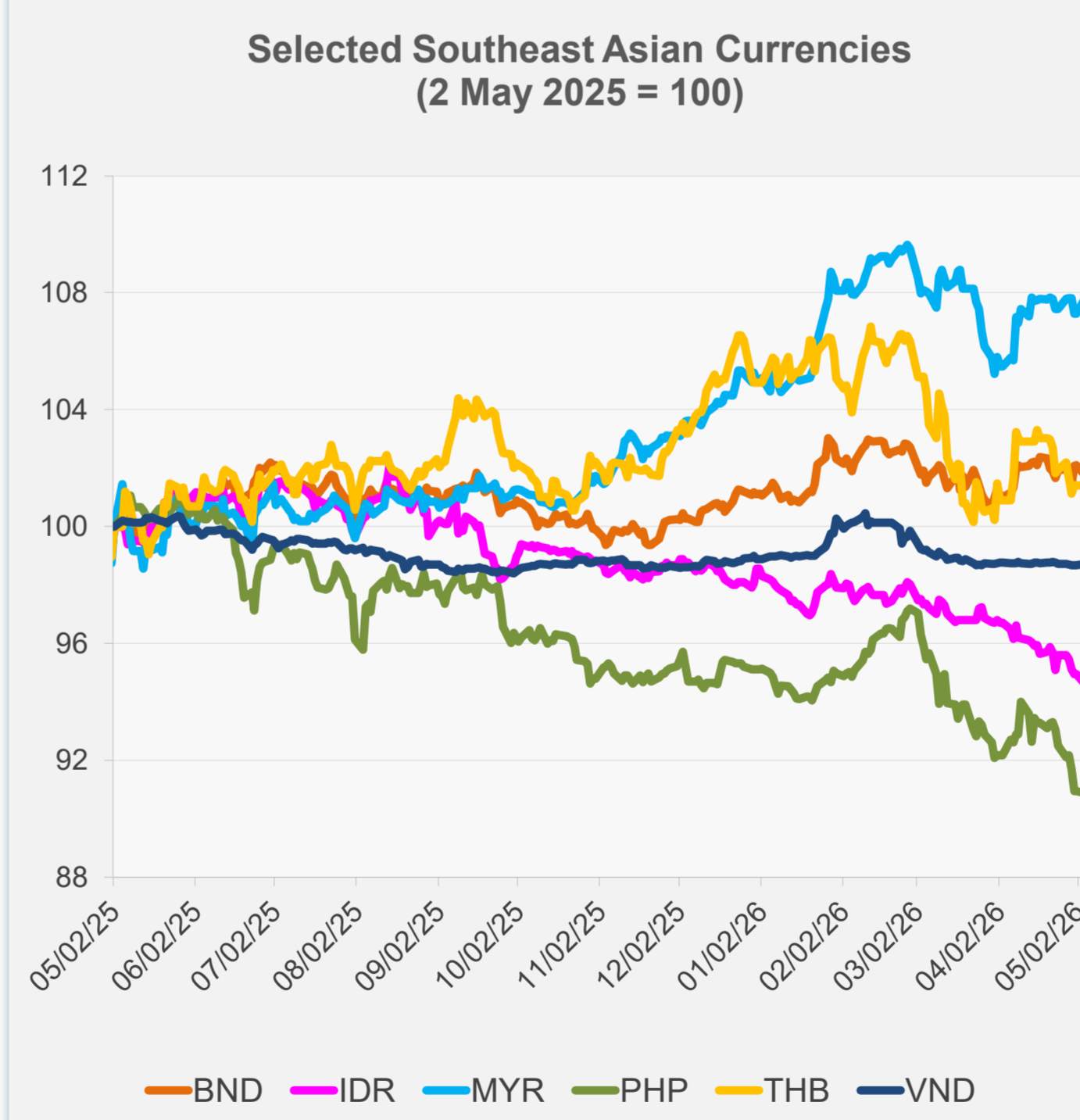


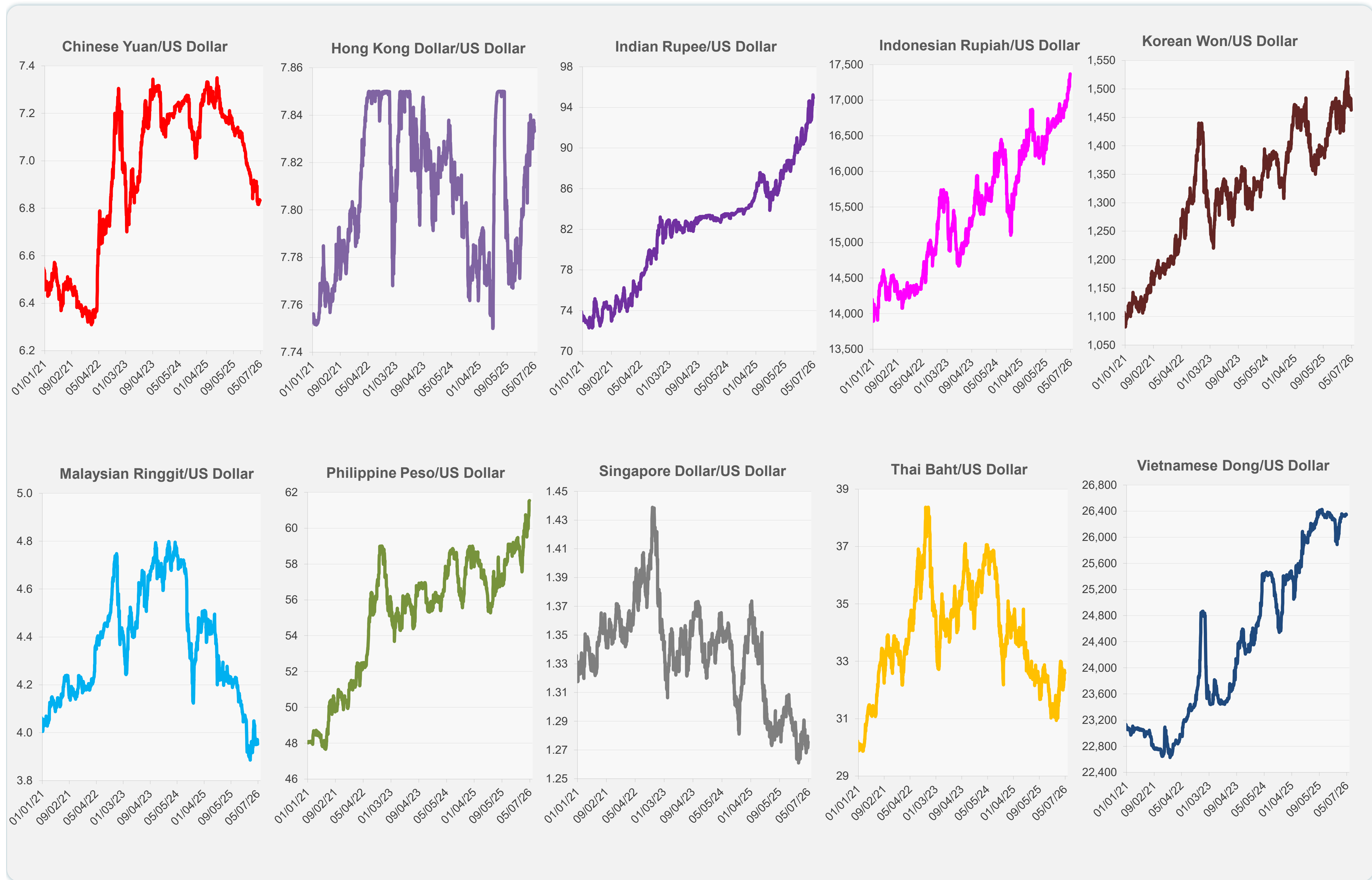
	Latest Closing	% change from Previous Day	% change from 01-Jan-26
Euro	0.85	-0.51	-0.31
Japanese yen (JPY)	156.62	0.00	-0.41
Bangladeshi taka (BDT)	122.70	0.33	-0.37
Brunei dollar (BND)	1.28	-0.32	0.63
Chinese yuan (CNY)	6.83	0.00	2.26
Hong Kong dollar (HKD)	7.83	0.03	-0.63
Indian rupee (INR)	94.94	0.31	-5.23
Indonesian rupiah (IDR)	17,370.00	-0.35	-4.00
Korean won (KRW)	1,462.80	1.40	-1.63
Malaysian ringgit (MYR)	3.95	0.47	2.66
Pakistan rupee (PKR)	278.75	0.00	0.49
Philippine peso (PHP)	61.54	-0.06	-4.44
Singapore dollar (SGD)	1.28	-0.32	0.82
Sri Lanka rupee (LKR)	319.75	-0.05	-3.17
Taipei,China NT dollar (TWD)	31.61	0.12	-0.54
Thai baht (THB)	32.60	0.00	-3.35
Vietnamese dong (VND)	26,342.50	0.05	-0.16



NIE = Newly Industrialized Economies



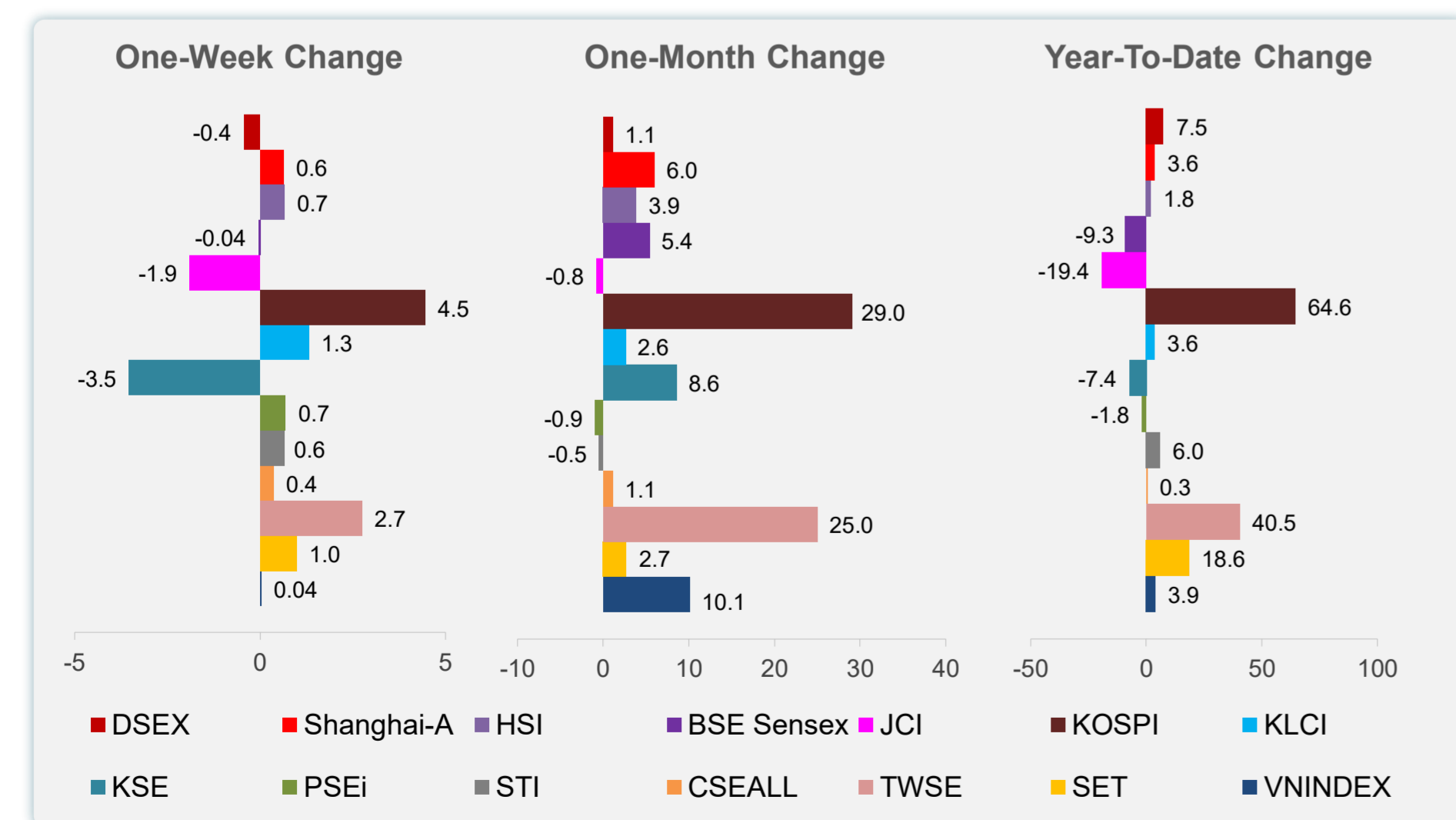
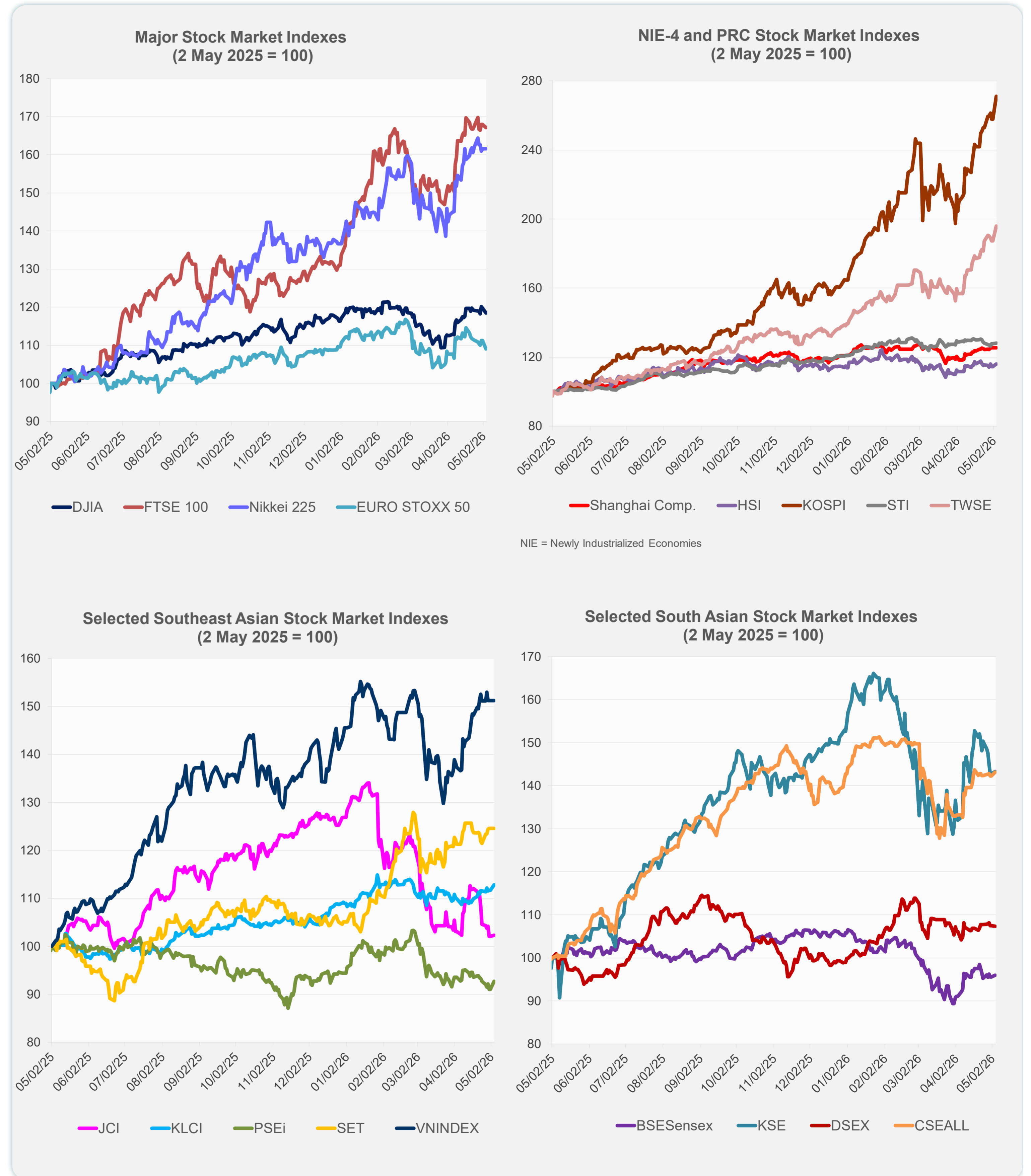
Note: Negative/Decreasing values indicate depreciation of local currency, and positive/increasing values indicate appreciation.
Source: ADB calculations using data from Bloomberg and Haver Analytics.



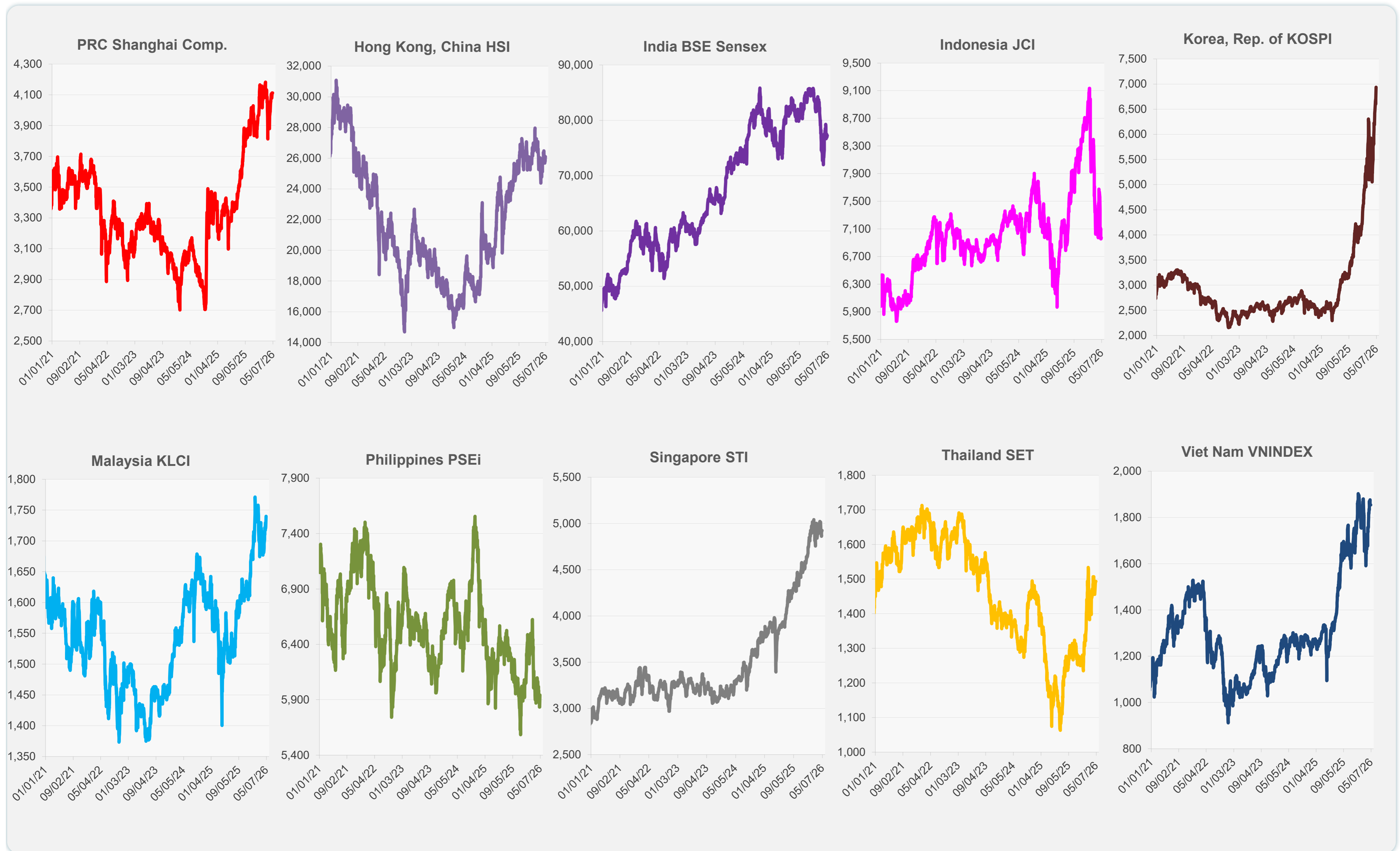
Source: Haver Analytics.

Daily Market Watch
STOCK INDEXES

	Latest Closing	% change from Previous Day	% change from 01-Jan-26
US Dow Jones Ind Avg	48,941.90	-1.13	1.83
US NASDAQ	25,067.80	-0.19	7.86
US S&P 500	7,200.75	-0.41	5.19
UK FTSE 100	14,369.61	-0.51	27.60
EURO STOXX 50	5,763.61	-2.00	-0.48
Japan NIKKEI 225	59,513.12	0.00	18.22
Bangladesh DSEX	5,277.81	-0.17	7.48
PRC Shanghai Comp.	4,112.16	0.00	3.61
Hong Kong, China HSI	26,095.88	1.24	1.82
India BSE Sensex	77,269.40	0.46	-9.30
Indonesia JCI	6,971.95	0.22	-19.37
Korea, Rep. of KOSPI	6,936.99	5.12	64.61
Malaysia KLCI	1,739.77	1.03	3.55
Pakistan KSE 100	163,492.00	0.34	-7.36
Philippines PSEi	5,942.16	1.86	-1.83
Singapore STI	4,924.31	0.24	5.99
Sri Lanka CSEALL	22,695.00	0.65	0.31
Taipei, China TWSE	40,705.14	4.57	40.54
Thailand SET	1,493.69	0.00	18.58
Viet Nam VNINDEX	1,854.06	0.00	3.90



Sources: ADB calculations using data from Bloomberg and CEIC Data Company.



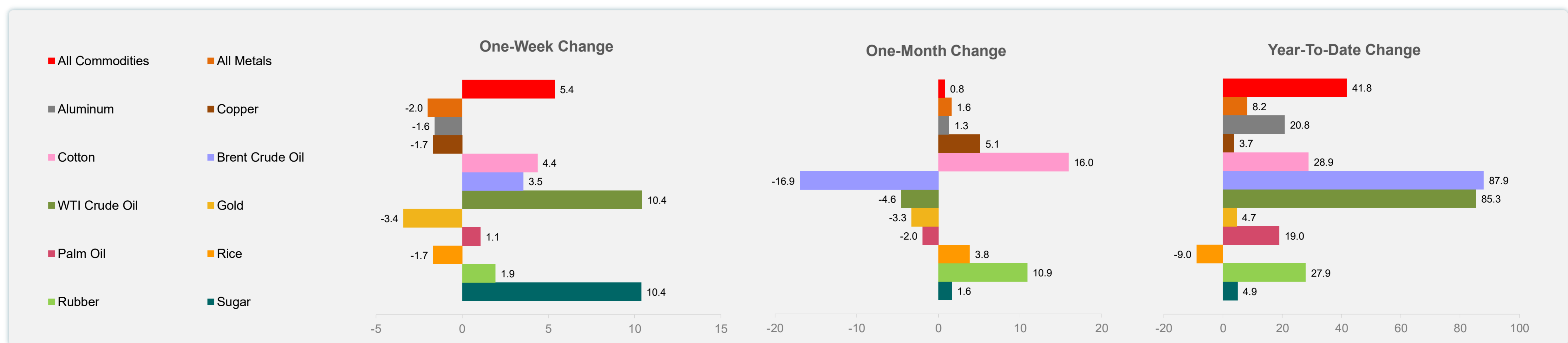
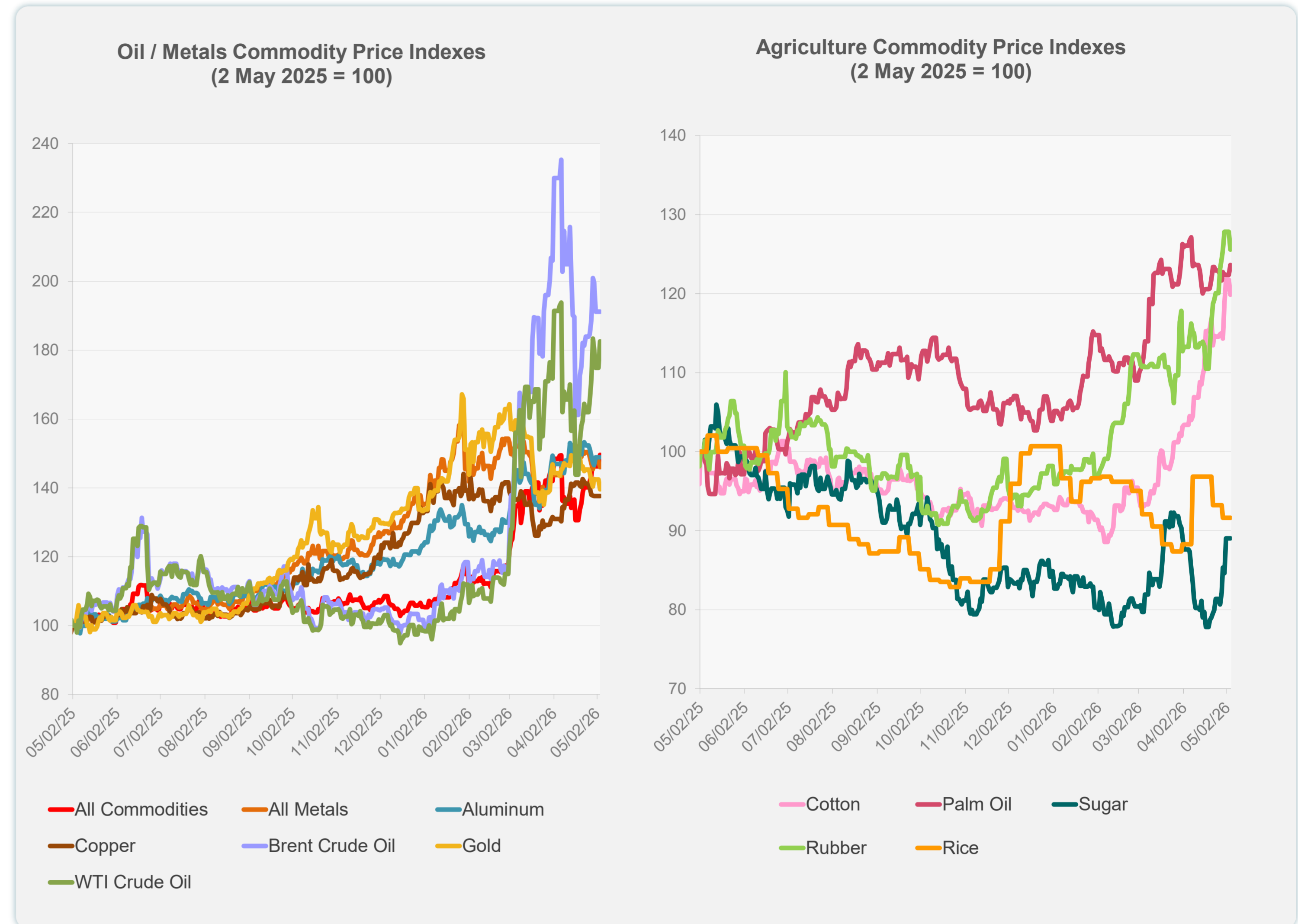
Sources: ADB calculations using data from Bloomberg and CEIC Data Company.

Daily Market Watch
COMMODITY PRICES

	Unit	Latest Closing	% change from Previous Day	% change from 01-Jan-26
S&P All Commodities	US\$	777.81	2.30	41.80
S&P All Metals	US\$	480.05	-1.23	8.18
Aluminum	US\$/metric ton	3,585.81	0.00	20.82
Copper	US\$/metric ton	12,916.40	0.00	3.72
Cotton	US cents/lb	79.92	-1.56	28.86
Brent Crude Oil	US\$/barrel	117.36	0.00	87.93
WTI Crude Oil	US\$/barrel	106.42	4.39	85.34
Gold	US\$/troy oz	4,521.91	-2.00	4.69
Palm Oil	US\$/metric tonne	1,152.62	1.01	18.99
Rice ¹	US\$/metric ton	406.00	0.00	-8.97
Rubber ²	US\$/kg	275.00	-1.79	27.91
Sugar	US cents/lb	15.52	0.00	4.94

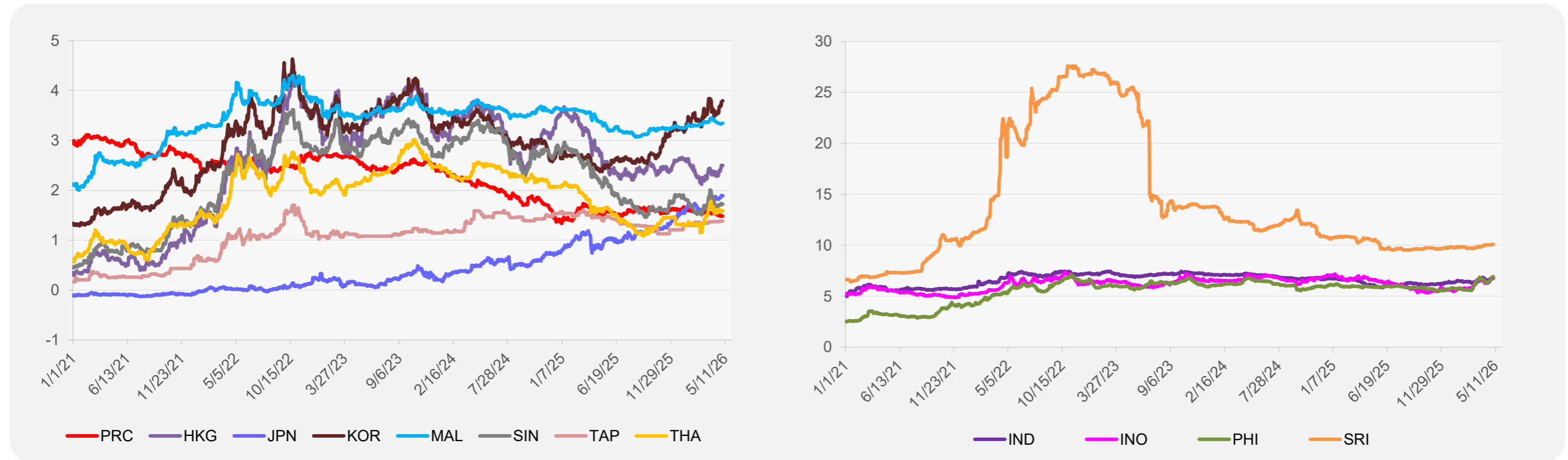
¹ Latest closing price from 22 April 2026.

² Singapore Exchange, Ribbed Smoked Sheet Rubber.

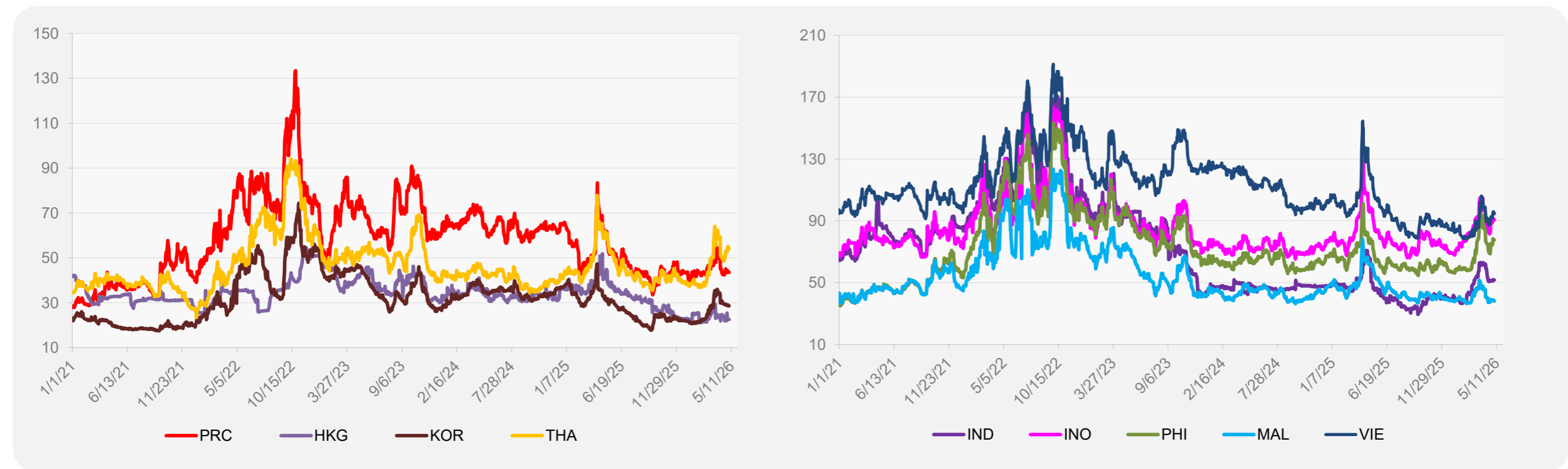


Source: ADB calculations using data from Bloomberg.

5-YEAR LOCAL CURRENCY GOVERNMENT BOND YIELDS (%)



5-YEAR CREDIT DEFAULT SWAP¹



¹ In USD and based on sovereign bonds.
Source: ADB calculations using data from Bloomberg.